

Burners & Torches / Burs

FELT CONES • BUNSEN BURNERS • ALCOHOL & CASTING TORCHES • CARBIDE BURS

Felt Cones and Wheels

Felt Cones (Keystone)

For use with threaded mandrel or tapered spindle. Medium hard pure woolen felt. Package of 12.

- #1 - 1" x 1/2" Pointed — 23.00
- #2 - 1 1/2" x 3/4" Pointed — 28.00
- #3 - 2" x 1" Pointed — 59.00
- #4 - 1" x 1/2" Blunt — 23.00
- #5 - 1 1/2" x 3/4" Blunt — 28.00
- #6 - 2" x 1" Blunt — 59.00



Felt Wheels (Keystone)

- Hard (1" x 1/8") Pkg of 10 — 18.00
- Med (1" x 3/16") Pkg of 10 — 18.00
- Soft (1" x 1/4") Pkg of 10 — 18.00

Bunsen Burners

#5N Bunsen Burner (Buffalo)

For Natural Gas. Height 2 3/8", an economical bunsen burner with solid brass and black base.

Each — 10.50



#5U Bunsen Burner (Buffalo)

For Natural Gas. Height 4 1/2", has adjustable flame height. Solid brass w/ black base.

Each — 10.50



#6N Bunsen Burner (Buffalo)

Height 4 1/2", has adjustable flame height. Solid brass with black base.

- Natural Gas — 18.50
- Propane Gas — 15.00



Chrome Bunsen Burner (Keystone)

For Natural Gas. Height 2 3/8", an economical bunsen burner with solid brass and black base.

#111 Burner — 28.30

#30B Blowpipe (Keystone)

For Gas and Compressed Air. Operates on any fuel gas (except acetylene) including natural, mixed, propane, butane, etc. with compressed air. All these fuel gases are handled with equal ease...no change in tip or mixer required.

Each — 143.15



Safety Burner (Renfert)

Thermo-Electric Ignition System. Controls the flame function, extinguishes the flame (e.g. In the case of a draft the gas supply will be interrupted within 90 seconds). Maintenance-free safety mechanism.

- Natural Gas — 97.58
- Propane Gas — 97.58



Bijou 90 All-Purpose Burner

Ascending Pipes / Flame Control. Flame intensity is controlled via two ascending pipes, gas supply setting via rocking lever, individual control of oxygen supply via setting wheel.

- Natural Gas — 58.90
- Propane Gas — 58.90



Burner Accessories

Burning Alcohol

- Methyl, 1 qt — 3.75
- Methyl, 1 gal — 14.00

Alcohol Torches

Plastic Alcohol Torch

- Buffalo Torch — 5.50
- Keystone Torch — 6.65
- Replacement Wick (12) — 3.15



Alcohol Torch (Hanau)

For denatured alcohol.

Each — 125.00



Alcohol Lamps

Glass Alcohol Lamp with Hex Base (DLS)

For denatured alcohol. Holds 3 oz. w/ adj. 3/16" wick.

Each — 10.50

Chrome Alcohol Lamp (Buffalo)

For denatured alcohol. Constructed of chrome-plated brass, holds 5 oz. fuel, has a 3/8" dia. base, and features a fully adjustable wick.

#12 Each — 24.25



Butane Torches

Lab Burner (Lenk)

Compact and portable. Heats to 3000°F for 5.5 hours. Ideal for dental laboratories.

- Burner with Fuel — 30.95
- Burner Head only — 27.00
- Fuel Refill, 5.5 oz — 6.50



Harris Casting Torch



#1 Manual Handle Torch Kit

For use with oxygen and propane. Kit includes torch, manual handle, standard mixer, 6 1/2" torch tip tube and 2 tips #2N and #H.

- Auto Torch Kit — 341.00
- Manual Torch Kit — 304.50
- Torch Handle only — 31.00
- 6 1/2" Torch Tip Tube — 34.00
- Standard Mixer — 45.00

Manual Torch Tips:

2N (.052"dia) Soldering Tip — 23.00

Multiple Orifice Casting Tips:

#H (.034"dia/11 holes) Tip — 31.00

#5/52 (.064"dia/5 holes) Tip — 20.50



Casting Accessories

Harris Regulators

- Oxygen Regulator — 122.00
- Propane Regulator — 76.50



Torch Goggles

Each — 18.50

Casting Gloves

Each — 28.50

High & Low Speed HP Burs

Midwest Carbide Burs

Consistent in quality, they are produced in an ISO certified facility, carry the CE Mark and ADA Seal. This category boasts an extremely wide assortment of burs. Specify HP or FG shank.

- 10 pcs — 13.00
- Bag of 100 — 125.00

Round

1/4 - 1/2 - 1 - 2 - 3 - 4 - 5 - 6 - 7 - 8

Inverted Cone

34 - 35 - 36 - 37 - 37L - 38 - 39

Straight Fissure

56 - 57 - 57L - 58 - 60L

Taper Fissure

168 - 169 - 170 - 171

Straight Fissure Crosscut

556 - 557 - 558 - 559

Taper Fissure Crosscut

699 - 700 - 701 - 702 - 703

Straight Dome

1156 - 1157 - 1158

Straight Dome Crosscut

1556 - 1557 - 1558

Caulk Super Burs

Swiss made. See above for shapes. Specify HP or FG shank. Choose from Inverted cone 35 or 37.

- 10 pcs — 13.00
- Pkg of 100 — 125.00

Lab Carbide Burs (1/4" Lathe Shank)

Kegold & Regular Burs (Keystone)

Choose between Titanium Coated or Regular Carbide for these Lathe Burs. Burs are Regular, but some regular carbides have fine and coarse available.

- Kegold 1/2 (Titanium Coated) — 35.15
- Kegold 3/8 (Titanium Coated) — 27.92
- Regular 1/2 Carbide — 20.92
- Regular 3/8 Carbide — 18.46



A 1/2 B 1/2 C 1/2 D 1/2 E 1/2 A 3/8 B 3/8 C 3/8 D 3/8 E 3/8

Handpiece Shank Carbide Burs

Goldies & Regular Carbide (Dedeco)
Choose Titanium Nitride Coating or Regular Carbide for an inexpensive choice. Faster, smoother, cooler finishing of all materials, during operation the coating also acts as a continuous lubricant. Most carbides available with "Regular-Cut", "Fine-Cut" or "Coarse-Cut".

Goldies (Titanium Coated) — **16.95**

Regular Carbide (shown below) — **9.95**



9001 9002 9003 9004 9005 9006 9010 9011 9012 9013



9014 9015 9016 9051 9052 9061 9062 9063 9064 9091

Kegold HP Burs (National Keystone)

Coated with gold colored Titanium Carbide - High Speed - Faster Cutting - Longer Lasting - Spiral cut - Precision burs that require less pressure and cut smoothly with minimum heat - Hand ground to insure quality control.

Each — **14.50**



88A 84T 83E 81A 63B 53A 52C 82T 52D



51A 73C 41P 71G 32P 31P 44C

Carbide HP Burs (National Keystone)

Spiral cut - Precision burs that require less pressure and cut smoothly with minimum heat. Burs available in Fine, Medium or Coarse.

Each — **10.10**



88A 84T 83E 81A 63B 61A 53A 52C 82T



52D 51A 73C 41P 71G 32P 33C 31P 44C

NK Burs — **7.50**



NK8 NK7 NK6 NK5 NK4 NK3 NK2 NK1

Casting Machines



Centrifigo Casting Machine (Kerr)

A dependable broken arm casting machine for all types of dental castings. Precision engineered and built tough so you can depend on it day after day, year after year. Casts all flasks up to 3-1/2" diameter x 2-5/8" high (90 x 65mm). Accessories include casting tongs, casting rings & formers, and cradles. Standard Dental Lab Casting Machine.

Casting Machine w/ Access. — **485.00**

Casting Machine only — **425.00**

Cradle (1C, 2C or 3C) — **13.75**

Crucible Carriage — **61.50**

Heavy Duty Spring — **56.95**

Super Heavy Duty Spring — **76.00**



AccuCast Casting Machine (Buffalo)

With pre-calibrated balancing, positive-locking crucible carrier, carrier adapter, drop-in spring, rugged construction, saves gold and snap-in cradles.

Complete with Accessories — **575.00**

Quartz Crucibles

Zircon Alumina Crucibles (KerrLab)

30 dwt, color coded. Chose pink, blue, white or yellow.

Each — **18.75**



Quartz Crucibles (Wesgo)

Able to stand high temperatures, non-contaminating.

Small A — **24.00**

Type A — **28.00**

Slotted A — **28.00**

Type D — **48.00**



Quartz Crucible (KerrLab)

Slotted, Large 2½ oz — **32.25**

White Lightning

(Euro-Worlident)

Slotted — **17.00**

Hooded — **17.00**



HP Rotating Bur Blocks

Revolving Bur Organizer #3043

(Pfungst)
Holds 150 HP burs.

Each — **14.00**



Clay Crucibles

Clay Crucibles (DLS)

Developed to give optimum compatibility with both precious and non-precious alloys.

Small 1 oz — **7.00**

DFC Slotted — **7.50**

DFC Hooded — **7.50**

Induction I — **11.75**

Induction II — **11.75**



Clay Crucibles (KerrLab)

Small 1 oz, Pkg of 2 — **21.95**

Large 2½ oz, Each — **15.95**



Silica (Fine Quartz) Crucibles

Hi-Heat Silica Crucibles are made of fine quartz.

Hooded Crucible (Keystone)

Fits Kerr, Lucas and Emesco Machines.

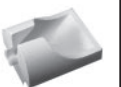
Each — **16.70**



Slotted Crucible (Keystone)

Fits Kerr and Emesco Machines.

Each — **17.50**



High Heat Silica Crucibles (Keystone)

Quality silica, able to withstand high temperatures, non-contaminating.

Small A — **9.85**

Type A — **21.40**

Type D — **20.30**

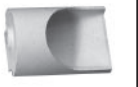


Hooded Crucibles #58 (Tri-Dynamics)

Fits centrifugal casting machines; including Kerr, Emesco; Color coded for easy identification of metals; Designed with a flat inner table allowing less turbulence.

Choose Gold, Blue or White.

Hooded — **13.00**



Slotted Crucibles #59

(Tri-Dynamics)

Same description as hooded crucibles. Choose Gold, Blue or White.

Slotted — **13.00**



Casting Products

CASTING RINGS & FORMERS • RINGLESS CASTING • RING LINERS

Keystone Casting Rings & Formers

Casting Rings (Keystone)

Stainless steel, Hi-temp.

- 1 1/4" D x 1 1/2" H — **4.15**
- 1 1/2" D x 1 1/2" H — **4.60**
- 1 1/2" D x 1 1/2" H — **6.25**
- 1 3/4" D x 1 1/2" H — **5.75**
- 1 3/4" D x 1 3/4" H — **6.75**
- 2" D x 2" H — **9.35**
- 2 1/2" D x 2" H — **12.60**
- 3" D x 2 1/2" H — **15.45**
- 3 1/2" D x 2 1/2" H — **22.55**

Crucible Formers (Keystone)

- 1 1/4" dia. — **6.40**
- 1 1/2" dia. — **8.55**
- 1 3/4" dia. — **9.25**
- 2" dia. — **10.10**
- 2 1/2" dia. — **10.70**
- 3" dia. — **10.75**
- 3 1/2" dia. — **10.75**



Harvest Dental/Avtek Super Ring System

Plastic Ringless Casting System. Produces precision castings, equal expansion in all directions, eliminates ring liners, easy divesting, tapered, durable & reusable. Rings are red, formers are white.

- A** 1 1/2" 90g Ring, Pkg of 6 — **17.50**
- B** 1 3/4" 120g Ring, Pkg of 6 — **17.50**
- C** 2 5/8" 300g Ring, Pkg of 3 — **14.50**
- D** 3 1/4" 450g Ring, Pkg of 3 — **14.50**
- E** 1 1/4" x 1 1/4" 90g Oval Ring, Pkg of 6 — **17.50**
- F** 2 1/2" x 2 1/4" 120g Oval Ring, Pkg of 6 — **17.50**

- A** 1 1/2" Former, Pkg of 6 — **17.50**
- B** 1 3/4" Former, Pkg of 6 — **17.50**
- C** 2 5/8" Former, Pkg of 3 — **14.50**
- D** 3 1/4" Former, Pkg of 3 — **14.50**
- E** 1 1/4" x 1 1/4" Oval Former, Pkg of 6 — **17.50**
- F** 2 1/2" x 2 1/4" Oval Former, Pkg of 6 — **17.50**



Whip Mix Casting Rings & Formers

Made of a special pyronel alloy metal. Even after repeated heatings they remain precision fitting and stable in size. They do not flake, corrode, or peel away.

Casting Rings

- (4085) 1 1/4" D x 1 3/8" H — **10.50**
- (4086) 1 1/4" D x 1 5/8" H — **11.50**
- (4087) 1 1/4" D x 1 7/8" H — **12.00**
- (4088) 1 1/4" D x 2-3/16" H — **13.25**
- (4181) 1 1/2" D x 1-9/16" H — **13.60**
- (4089) 1 1/2" D x 2-3/16" H — **16.50**
- (4180) 1 3/4" D x 1-9/16" H — **15.50**
- (4090) 1 3/4" D x 2-3/16" H — **18.50**
- (4214) 2" D x 1 7/8" H — **20.50**
- (4391) 2 1/2" D x 2 1/4" H — **23.50**



Crucible Formers

- (4081) 1 1/4" dia. — **12.75**
- (4179) 1 1/2" dia. — **12.75**
- (4177) 1 3/4" dia. — **12.75**
- (4215) 2" dia. — **12.75**
- (4390) 2 1/2" dia. — **12.75**

Vaniman Spectrum Sprue Formers

- 1 1/4" (Purple) — **4.25**
- 1 1/2" (Dark Blue) — **4.75**
- 1 3/4" (Medium Blue) — **5.25**
- 2" (Light Blue) — **5.75**
- 2 1/2" (Yellow) — **6.25**
- 3" (Orange) — **6.75**
- 4" (Red) — **7.25**



Oval Casting Rings

Oval Casting Rings & Formers (Whip Mix)

- (4210) Small 1 1/8" Oval Ring — **17.50**
- (4212) Large 1 1/8" Oval Ring — **20.10**
- (4211) Small Oval Former — **14.50**
- (4213) Large Oval Former — **15.50**

Ringless Casting Systems

Ringless Bellecast (KerrLab)

Ringless ovals are precision molded in a flexible, clear polyvinyl that allows investment expansion, doesn't stick to investment & cleans up with an easy water rinse.

- Large Oval Set, 130g — **20.95**
- Small Oval Set, 90g — **20.95**



Caliber "Clearese" Sprue Formers & Rings

For minimum expansion of the investment, rings will not deform and will always return to original shape. The clear ring provides the tech to locate the exact beat center. Available Ring and Former sizes: 1 1/4", 1 1/2", 2", 2 1/2" and Oval.

- Round Ring — **9.50**
- Round Former — **9.50**
- Round Set — **19.00**
- Oval Ring — **12.25**
- Oval Former — **12.25**
- Oval Set — **24.50**
- Oval Cradle — **16.50**



Casting Accessories

We have assorted casting accessories not listed here. Call for details.

Universal Casting Tongs (KerrLab)

Each — **8.50**



Casting Tongs (Integral Systems)

Each — **24.50**

Casting Well (Integral Systems)

Complete with a galvanized steel base for use with centrifugal casting machines. Standard size is 20" x 11" (51 cm x 21 cm). Special sizes and diameters may be ordered.

Each — **135.00**



Ring Liners

Non-Cellulose Liner (American Dental) *Abestos free, 50' roll.*

- 1 1/4" x 1/32" — **12.00**
- 1 1/4" x 1/16" — **12.00**
- 1 1/2" x 1/32" — **11.50**
- 1 1/2" x 1/16" — **14.00**
- 1 3/4" x 1/32" — **15.50**
- 1 3/4" x 1/16" — **18.00**
- 2" x 1/32" — **16.50**
- 2" x 1/16" — **18.00**
- 3" x 1/32" — **22.50**
- 3" x 1/16" — **35.00**

Cellulose Liners (Whip Mix)

Abestos free, 60' roll, has none of its inherent hazard.

- 1 1/8" Liner — **7.50**
- 1 3/8" Liner — **8.50**
- 1 5/8" Liner — **9.50**
- 3" Liner — **13.00**

