

Saw Blades / Soldering

SAW FRAMES • SOLDERS • SOLDERING ACCESSORIES

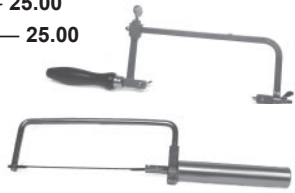


Saw Frames

(Keystone) Saw Frames

Offset Frame — 25.00

Straight Frame — 25.00



(Foredom) Comfort-Grip Frame

with 8 blades — 15.95

(Whaledent) Pindex PX-200 Saw Kit

Frame with 12 blades of .007" and .010"

PX-200 Kit — 67.50

(Neytech) Saw Frame Kit

Frame with 10 Blades — 15.90

(DLS) Saw Frame

Offset Frame — 20.00

Unpinned Saw Blades

(Di-Equi) Unpinned Blades

5" x .007", 100 pcs — 7.50

5" x .010", 100 pcs — 7.50

5" x .007" Ultra Cut, 100 pcs — 69.50

5" x .010" Ultra Cut, 100 pcs — 69.50

Pinned Saw Blades

Saw Blades (DLS)

5" x .007", 10 pcs — 4.50

5" x .007", 100 pcs — 38.00

5" x .010", 10 pcs — 4.50

5" x .010", 100 pcs — 32.00

Saw Blades (Keystone)

5" x .007", 10 pcs — 4.95

5" x .007", 100 pcs — 45.00

5" x .010", 10 pcs — 4.95

5" x .010", 100 pcs — 40.00

4" x .010", 100 pcs — 40.00



Saw Blades (Di-Equi)

5" x .007", 10 pcs — 5.50

Extra-Fine Blades (Neytech)

Blades, 10 pcs — 9.00

Pindex Blades(Whaledent)

(PX301) .007" Blades, 100 pcs — 63.75

(PX301) .010" Blades, 100 pcs — 55.00

Pre-Solders

for Precious Ceramic Alloys

Porcelain Silver-Free (Baker)

Platinum color - 84% Au - 10% Pd - Melting 1960°-1985°F

Each — 27.50

Post-Solders

for Precious Ceramic Alloys

615 Precious Alloy Solder (Baker)

Gold color - 61.5% Au - 14.9% Ag - Melting 1340°-1490°F

Each — 22.90

C&B Precious Alloy Solder

615 Precious Alloy Solder (Baker)

Gold color - 61.5% Au - 14.9% Ag - Melting 1340°-1490°F

Each — 22.90

Silver Solder

Silver Solder (Masel)

For all orthodontic brazing works. Cadmium free, silver content 55%. Low melting point is 600°C.

.015", 5 dwt — 10.50

.025", 5 dwt — 10.50

Pre-Solders

for Non-Precious Alloys

2200 Solder (California Dental)

High-fusing for non-precious metal, easy flowing with melting range 2100°-2200°F. Excellent for porcelain bake-on.

10 dwt — 38.25

Vera Solder (Aalbadent)

2 dwt — 12.00

Post-Solders

for Non-Precious Alloys

Cal-Multi Solder (California Dental)

All purpose, for chrome and gold. Solder gold to gold, gold to chrome, chrome to chrome. Low melting (1130°F), 85,000 psi.

Flat, 5 dwt — 40.50

Round, 5 dwt — 40.50

Chrome Welding Rods

Cal-Welding Rod (CDP)

Easy flowing, high strength. Platinum color. Melting range 1700°-1800°F. Can be used with torch or electric.

10 dwt — 19.50

Silver Solder

Vera P.D. Solder (Aalbadent)

2 dwt — 12.00

Electric Solders

"5 Star" Dental Solder

For chromium alloy, stainless steel and gold. Strong, quick-flowing rapid build-up, always uniform. In yellow-gold color.

1 oz — 47.00

Cerami-Flo Solder

For the electric soldering of ceramic crown and bridge metals.

10 dwt (1/16" rods) — 33.50

Perfec-Flo Solder

For all electric soldering operations. Triple thickness reduces electrical resistance and provides uniform heat distribution.

6 dwt — 32.00

Solder & Flux in One

Flo-Gold (Dentsply Neytech)

Unique formula of solder and flux in a paste. Can be applied at room temperature with no pre-fluxing. The special applicator reduces waste and improves torch control because it is applied prior to torch heating.

Specify: FPS (Ceramic Post),

LF2 (Crown&Bridge), LF3 (Crown&Bridge), HF2

(Ceramic Pre-Solder), or HF3 (Ceramic Pre-Solder).

5gm of material, Each — 115.00

Heat Protectors

Thermoton Heat Absorbing Paste (Renfert)

Secure protection of facings and acrylic parts. No sparks even in direct contact with flame. Pasty consistency guarantees simple and precise application.

200g Jar — 14.53

Hot-Stop Heat Protection Gel (Renfert)

No discoloration or burns on acrylic. Easy-to-use tube. Absorption of 97% of arising heat. Does not dry up due to airtight acrylic tube.

250g Tube — 16.26

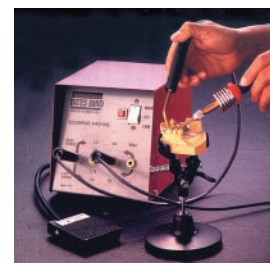
Soldering Machines

Electric Soldering Machine

(Yates-Motloid)

Repairs and additions can be made instantly without the inconvenience, delay and danger of using a torch. Provides seven heat settings to accommodate virtually every soldering need. Often provides a quick esthetic and functional repair that can save a costly remake.

Each — 535.00



Soldering Clamps

Soldering Clamp (DLS)

Each — 23.50

Soldering Tables

Turn N' Solder (American Dental)

Soldering board mounted in heat-resistant turntable.

6" x 6" x 1/2" Table — 40.75



Convection Soldering Table (American Dental)

Professional speed cure support for Place-It. Includes 6" x 6" convection table, two 3" dia. screens and turntable support frame.

Each — 60.00

Soldering Flux

Beryllium Alloy Flux (Neytech)

Use with soldering beryllium-containing nickel-chromium alloys.

1 oz Jar — 8.50

Fluoride Solder Flux (Neytech)

Use with soldering beryllium-free nickel-chromium alloys.

1/2 oz Jar — 12.20

Borax Soldering Flux (Neytech)

For soldering connections of conventional crown & bridge, many porcelain alloys, and post soldering.

1 oz Jar — 8.50

2200 Flux (CDP)

For high-temperature soldering, promotes wetting action.

Jar — 7.25

Cal-Multi-Flux (CDP)

All-purpose soldering flux for chrome and gold.

Jar — 6.25

Anoxan Flux (Degussa)

For pre-soldering porcelain alloys.

50ml — 28.50

DS 1 Flux (Degussa)

For post-soldering porcelain and crown & bridge alloys.

100ml — 23.50

Gresco Flux (Gresco)

1/2 oz — 7.95

Casting Flux

Casting Flux Powder (Neytech)

A fine, black powdered flux to be used during the melting of gold alloys to prevent oxidation.

3 oz can — 8.50

Casting & Welding Powder (CDP)

Use on chrome during casting and welding. Reduces oxidation. Activates fluidity of molten material.

Flux (Powder) — 6.25

Gold Casting Powder (CDP)

Use on gold and other precious alloys during casting.

Flux (Powder) — 6.25

NPG Cast Flux (Aalbadent)

3 oz — 9.25

Veriflux (Degussa)

90gm — 25.00

Silver Flux

Masel Flux (Masel)

2 oz — 7.50

Anti Flux

Anti Flux (Neytech)

Use to block off areas where solder is not desired.

1 oz — 8.50

Chrome Flux

Chrome Welding Flux (California Dental Products)

For welding chrome, promotes wetting action.

Jar 4 oz — 6.75

Electric Flux

Cerami-Flo Flux (Yates-Motloid)

Excellent capillary attraction protects ceramic metal surfaces from oxidation and provides the penetration required for successful solder joints.

20gm — 6.50

Miraflux (Yates-Motloid)

For all soldering operations, flows at 900°F. It protects metal from oxidation while heating and also assists in the flow of the solder. This easy-to-use creamy paste form is adaptable to all soldering operations on gold, silver and stainless steel. Also recommended for use with blowpipe or Bunsen burner.

2 oz — 7.50



Handler Splash Pans

Some models have light or shield. Plastic shutoff can also be added. Specify left or right side for the light.

Resin Splash Hood

No rusting, no pitting, easy to clean, long lasting and durable. Comes with light and shield. 6"W x 10"D x 12"H (Specify right or left light).

86RHL — 67.00

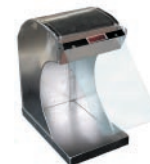


#83 Aluminum Splash Hood

Aluminum hood with insert pan. 12"H x 6"W x 10"D

83NL (no light) — 42.75

83WL (with light) — 47.50



#84 Aluminum Splash Hood

Most popular. Aluminum hood with insert pan. 12"H x 8"W x 12"D

84NL (no light) — 54.50

84WL (with light) — 58.50



#85 Aluminum Splash Hood

Aluminum hood with insert pan. 12"H x 10"W x 14"D

85NL (no light) — 63.50

85WL (with light) — 68.50



Plastic Splash Pans

Plastic Splash Hood

Each — 49.95



Plasdent Plastic Lab Pans

Small Lab Pan

Colors available: White, Lt. Blue, Red, Rose, Lt. Pink, Neon Pink, Beige, Neon Purple, Black, Tangerine or Teal. 7 3/8" x 4 3/8" x 2 3/8" Deep

Each — 1.35

Lab Pan with Metal Clip

Colors available: White, Lt. Blue, Neon Blue, Lt. Yellow, Neon Yellow, Aqua, Red, Rose, Lt. Pink, Neon Pink, Beige, Lt. Gray, Neon Purple, Black, Tangerine or Teal. 7-1/16 x 5 5/8" x 2 3/8" Deep

Each — 1.75 Dozen — 18.50

Large Pro Lab Pan

Colors: White, Lt. Blue, Red, Rose, Lt. Pink, Neon Pink, Beige, Neon Purple, Black, Tangerine or Teal. 8 5/8" x 8 5/8" x 2 3/8" Deep

Each — 4.50



Sprues

INDIRECT, RESERVOIR, HOLLOW, DIRECT, QUIK & CIRCULAR SPRUES

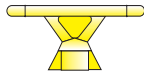
Wax Sprues / Indirect

Original Ready Sprues (KerrLab)

Molded with a distribution bar the correct length for Large Oval Formers. Trimming markers indicate where to trim the bar for use with Small Oval Formers. Firts stainless steel and ringless ovals. 4mm dia./Distribution bar, 4.6cm long

Yellow, 50 pcs — **22.50**

Yellow, 250 pcs — **84.50**



Stick-Tite Ready Sprues (KerrLab)

Use a hot spatula tip to heat a spot on distribution bar where a sprue gate will be attached. The molten spot will remain tacky while setting the Quik sprue gate.

4mm dia./Distribution bar, 4.6cm long

Green, 50 pcs — **22.50**

Green, 250 pcs — **84.50**

5mm dia./Distribution bar, 4.6cm long

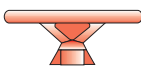
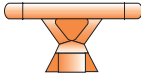
Orange, 50 pcs — **22.50**

Orange, 250 pcs — **84.50**

5mm dia./Distribution bar, 5.5cm long

Red, 50 pcs — **26.50**

Red, 250 pcs — **127.50**



Runner Bar (Harvest-Avtek)

High strength wax formula, burns out clean at low temperature.

3/16" Red, 50 pcs — **17.50**

3/16" Red, 200 pcs — **52.50**



Solid Reservoir Sprues

Plastic Sprues (Neytech)

Made from low-temperature plastic.

Straight 8ga (100) — **10.10**

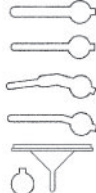
Straight 13ga (100) — **10.10**

Offset 8ga (100) — **10.10**

Offset 13ga (100) — **10.10**

Reservoirs (500) — **38.50**

Reservoir Holders (50) — **9.50**



Hollow Reservoir Sprues / Plastic

Hollow Reservoir Sprues (Di-Equi)

BIG RED - for large castings & acid-etch bridges

6-8 gauge (500) — **49.50**

REGULAR BLUE - all purpose

8-10 gauge (500) — **49.50**

SHORT GREEN - for low-flow alloys

8-10 gauge (500) — **49.50**

MINI YELLOW - for high-flow alloys

10-12 gauge (500) — **49.50**



Plastic Holow Sprues

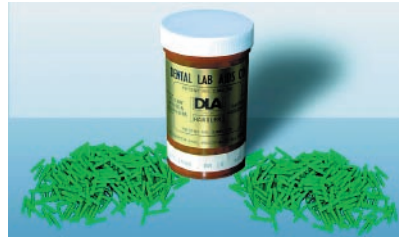
Hollow Sprues (Dental Lab Aids)

Green color. Various gauges (8,10,12,14) available depending on size.

1/2" Sprues... 1000 pcs — **23.50**

3/4" Sprues... 1000 pcs — **23.50**

1 1/4" Sprues... 1000 pcs — **23.50**



Hollow Sprues (DLS)

Green color. 8 gauge round 3".

Package of 200 — **28.50**

Sprue Bars

Plastic Sprue Bars (DLS)

6 ga., 30 pcs — **8.50**

8 ga., 30 pcs — **8.50**

10 ga., 30 pcs — **8.50**

Wax Reservoir Sprues / Direct

Wax Reservoir Sprues (Di-Equi)

Compounded for rigidity without brittleness. A super-low .002% ash content leaves a clean uncontaminated mold cavity after burnout.

8-10 ga (Blue), 500 pcs — **24.50**

8-10 ga (Blue), 1000 pcs — **44.50**

10-12 ga (Yellow), 1000 pcs — **45.00**

Wax Quik Sprues

Original Quik Sprues (KerrLab)

Use the smallest sizes on individual anterior copings and the larger ones on full metal crowns and pontics. Large patterns can use two sprues per unit and multiple unit bridges need a Quik Sprue gate per unit.

6 ga. (Green 2.25mm), 500 pcs — **19.50**

8 ga. (Yellow 1.75mm), 500 pcs — **17.00**

10 ga. (Blue 1.25mm), 725 pcs — **19.50**



Stick-Tite Quik Sprues (KerrLab)

Incorporates a small amount of sticky wax. To attach the sprues heat the end of the Quik Sprue and it will stick firmly to the pattern on the distribution bar.

6 ga. (Red 2.25mm), 500 pcs — **16.95**

8 ga. (Orange 1.75mm), 500 pcs — **16.95**

10 ga. (Purple 1.25mm), 725 pcs — **19.50**



Wax Wheel Sprues



Round Ready Sprues (KerrLab)

Molded with a distribution bar the correct length for Large Oval Bases. Trimming markers near the ends indicate where to trim the bar for use with Small Oval Bases. These sprues snap into the "slick release" Base Formers for belle's Stainless Ovals and bellecast Ovals.

Sm. Ringless Set - 120gm, 3 pcs — **33.50**

Lg. Ringless Set - 220gm, 3 pcs — **35.75**

Sm. Yellow Ready Sprues, 50 pcs — **26.75**

Lg. Yellow Ready Sprues, 50 pcs — **33.50**

Sm. Red Ready Sprues, 50 pcs — **26.75**

Lg. Red Ready Sprues, 50 pcs — **34.75**

Circular Sprue (Harvest-Avtek)

High strength, extra rigid wax formula and have no memory, preventing bridges from warping and bending during investing.

Large Red, 25 pcs — **17.50**

Large Red, 100 pcs — **52.25**

Small Orange, 25 pcs — **17.50**

Small Orange, 100 pcs — **52.25**



Renfert Casting Sprues

Pear-Shaped Casting Sprues

Set of casting sprues with pear-shaped melting reservoir for shrinkhole free precious metal casting. A high stability attachment, acrylic burs without residue, optimum pear shape avoid shrinkholes via controlled cooling.

Small, pkg of 250 — **00.00**

Large, pkg of 250 — **00.00**



Pear-Shaped Wax Casting Sprues

The technique for veneer crowns, cast crowns, veneer bridge shapes. 33mm length, pear head 6.6mm

Pack of 200 — **00.00**



Triangular Casting Sprues

Set of casting sprues for effective attachment of the wax model.

Pack of 100 — **00.00**

